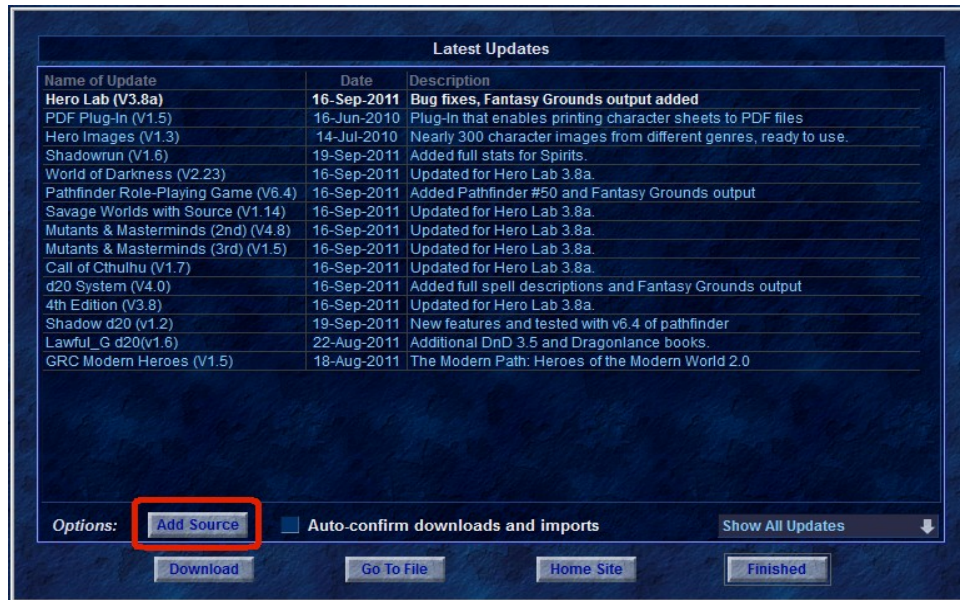


This document goes over how to setup your automatic download of the community created data packages. Doing the following steps will allow you to get updates from the Hero Lab community just like how you get official updates from Hero Lab. This feature is called the *Powered by Hero Lab* and is very easy to use.

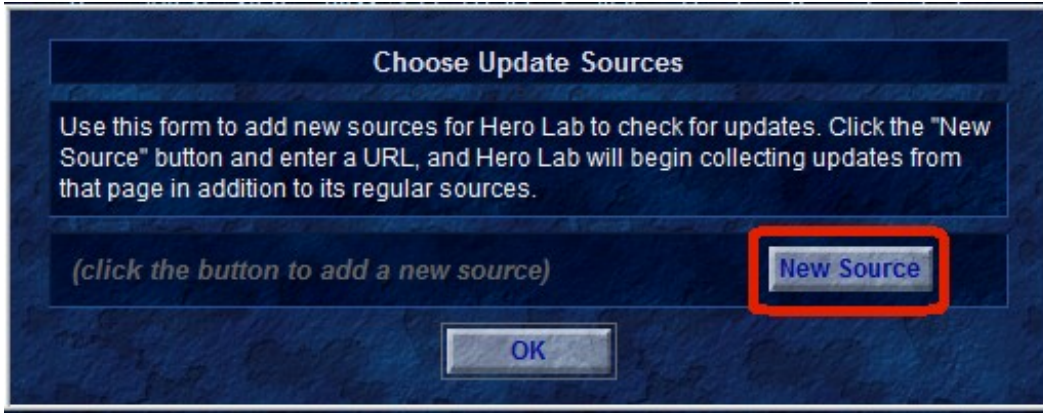
1. Start Hero Lab software and at the “**Select a Game**” window click on the “**Find Updates**” button in the bottom left corner.



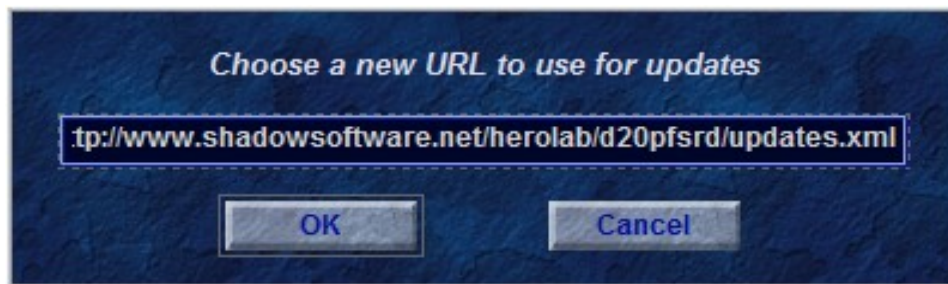
2. A new window will now open called “**Latest Updates**”. Click on the “**Add Source**” button at the bottom left of the screen.



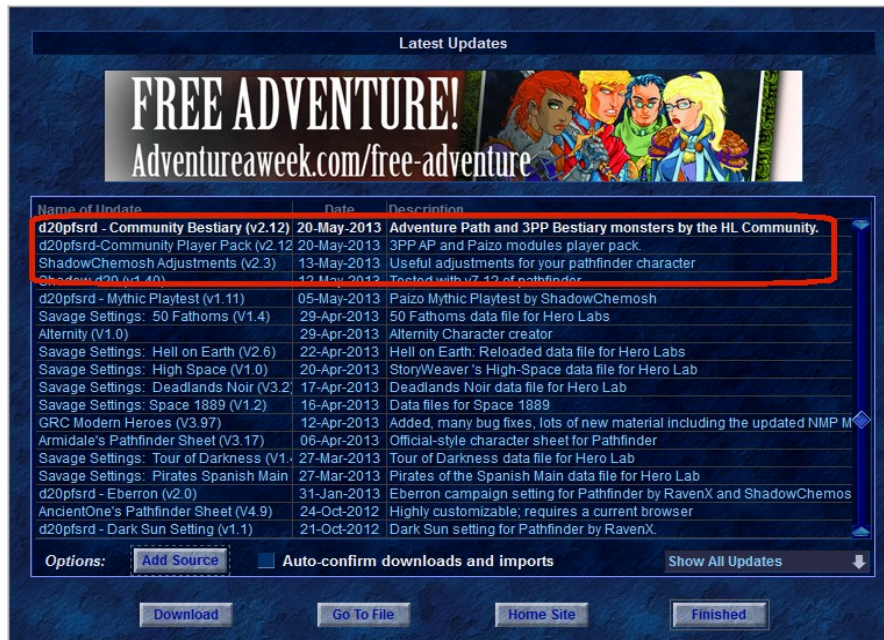
3. A new window called “Choose Update Sources” will open. Press the “New Source” button.



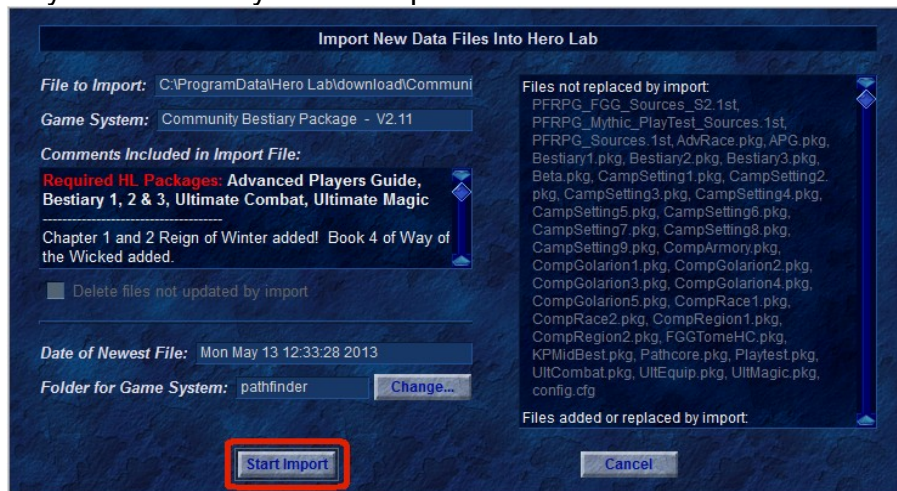
4. In the new window type in the full URL of where you would like to check for updates. The URL has to end in some type of .xml document
 - a) **For Pathfinder:**
 1. <http://www.shadowsoftware.net/herolab/d20pfsrd/updates.xml>
 - b) **For d20 (3.5):**
 1. <http://www.shadowsoftware.net/herolab/d20/updates.xml>
 - c) **For D&D 5e:**
 1. <http://www.shadowsoftware.net/herolab/5e/updates.xml>
 - d) If you don't see your game system listed here please check the game HL forums.



5. Press the blue **OK** button and press the blue **OK** button again to get past the information message.
6. To activate this new feature you ***MUST*** restart Hero Lab.
7. On the first screen where you can select different Games press the blue button on the right marked “Find Updates” which will then show this window:



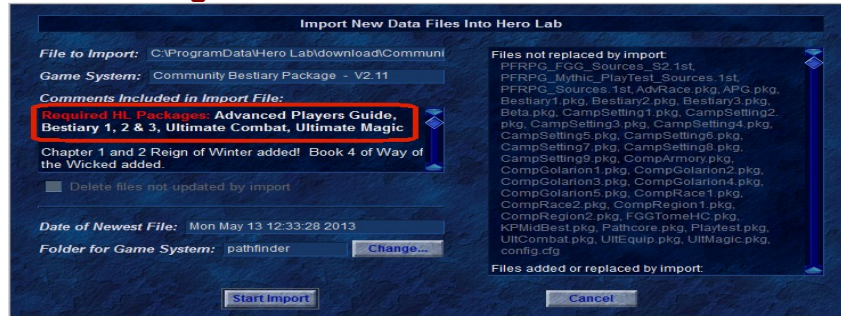
8. On this new window you will now see updates that start with “Pathfinder XXX Pack” or “d20 Community Set” or “D&D 5e Community Pack”. Click on the community Pack you wish to install and click the blue “**Download**” button to start the download. Once it is successfully downloaded you will be presented with a new window similar to this one:



9. This new window shows you information about the import that you are about to do. On the right side is a list of files that are going to be imported. There are comments to let you know some of the highlights for what was changed or added with this update.
- a) If you wish to install into the default directory, which in this case is **Pathfinder, d20 or 5e**, you can simply click the blue button marked “**Start Import**” at this time to finish the install. If you have need to install into a different directory please see the very end of this document.
10. Once installed you can start the **Pathfinder, d20 or 5e** game like normal.

Required HL Packages:

Some of the community Pathfinder Packs (ie currently only Pathfinder) require Hero Lab licenses past the CORE license. In example the Pathfinder GM Pack requires many other licenses. This list of required packages is listed on the install of each package after the wording “**Required HL Packages:**”



Please note that the installer is NOT smart enough to actually check for these packages. This is simply a NOTE I have manually entered to alert gamers of what is required.

This step is only if you wish to install into a different directory

1. If you wish to install into a different game directory then you will need to click on the blue button marked “**Changed...**”. you will presented with a new small window that will let you type in the name of the folder. For example you have a test Pathfinder game folder named Pathfinder_test. So in the small window you would type in Pathfinder_test.
 - a) Press the blue “**OK**” button and then press the blue button marked “**Start Import**” to do the import into your custom game folder.