

This document goes over how to setup your the SourceTree application in use with the GitHub source repository for HL community projects. Setup for other software should be very similar.

Table of Contents

Basic Concept of GitHub and a Source Repository.....	2
Where to Download.....	2
Source Tree Basic Layout.....	3
Add a new Data Folder.....	4
Add a new Local Repository.....	5
Create Link to Remote Repository.....	6
Getting/Pulling down the Pack user files.....	7
How out push your changes to GitHub.....	9
How to get changes from GitHub.....	11

Basic Concept of GitHub and a Source Repository

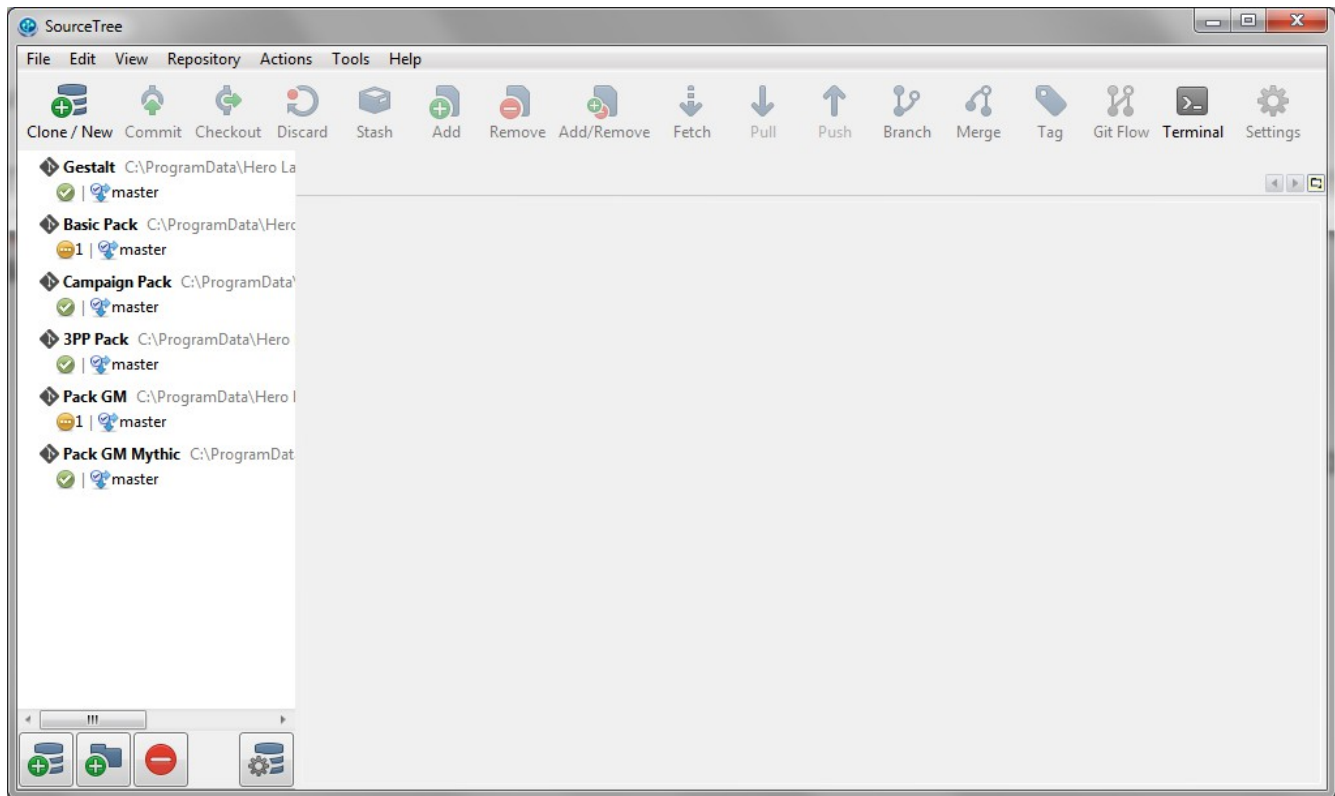
So the idea is that each repository will point to the GitHub web server and to a local folder on your computer. As you make changes to your local files SourceTree will detect these changes and allow you to commit and push the changes done to GitHub. Once on GitHub others will be notified of the changes and will do a Pull and Merge of your changes into their local copy of the repository.

Where to Download

Download and install the latest version of Source Tree from <http://www.sourcetreeapp.com/>

- a) Please not this only works on Windows 7 or Macs. For older versions of windows software try smartgit at <http://www.syntevo.com/smartgit/>

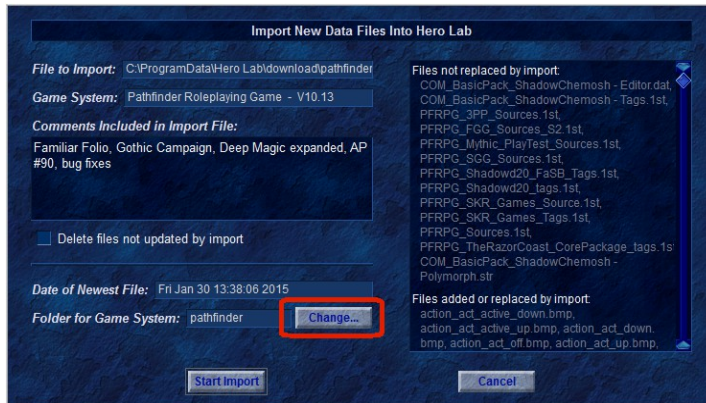
Source Tree Basic Layout



Above you can see I have a list of repository already defined that SourceTree knows about. For this example I will be setting up a new one for my Shadow d20 houserules files. I will touch on each of the different options below.

Add a new Data Folder

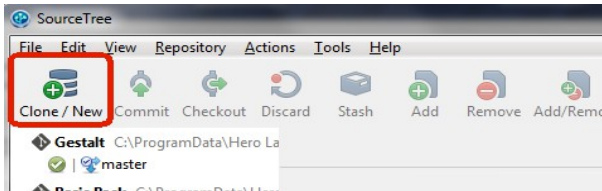
Firs step of adding a new repository is making a new Hero Lab “data” folder for it to live in. This allows for a clean place to do your work and changes. So for those on windows go to **C:\ProgramData\Hero Lab\download** and double click on the “**pathfinder.hl**” file to start a Fresh Install.



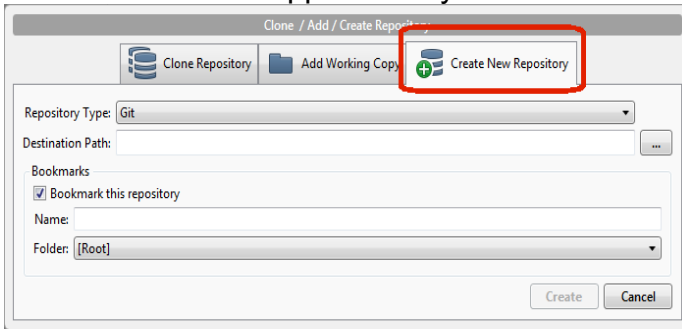
On the above window press the “**Change...**” button so that you can setup a NEW fresh folder. I recommend an easy to remember folder name. In example if this was to support the 3PP Pack I would name the folder “**pathfinder_Pack_3PP**”. Once changed to your new folder name press the “**Start Import**” button to load the latest Pathfinder files.

Add a new Local Repository

In the source tree software click on the “Clone / New” button:



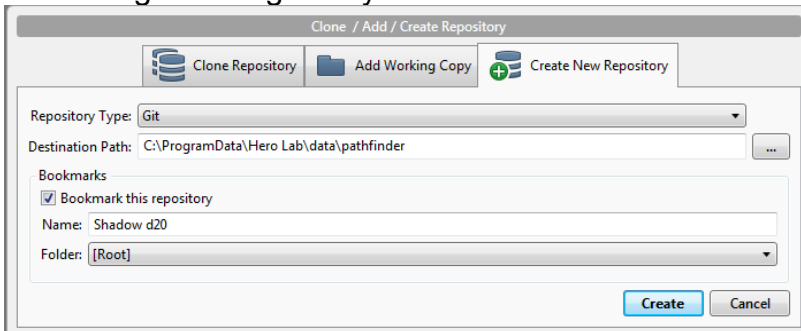
A new window will appear and you need to click on the “Create New Repository” tab:



For “**Repository Type:**” make sure “Git” is selected.

For “**Destination Path:**” you can select the path or type it in but it needs to be the “NEW” HL data folder you setup above. For this example I am inputting “**C:\ProgramData\Hero Lab\data\pathfinder**” where my Shadow d20 files exist.

Once you type in the Path a default “**Name:**” will be selected. Feel free to change this to something meaningful to you. Here is what it looks like before I press the “Create” button.



Once you press “Create” button a link to your “local” repository has been created but you still need to link to the Web Repository on GitHub.

Create Link to Remote Repository

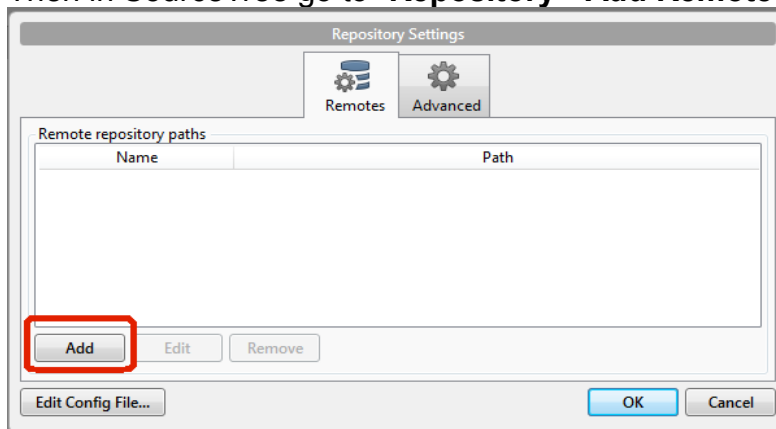
Browse to the github community repository on the web. In example:

<https://github.com/shadowchemosh/Shadowd20>

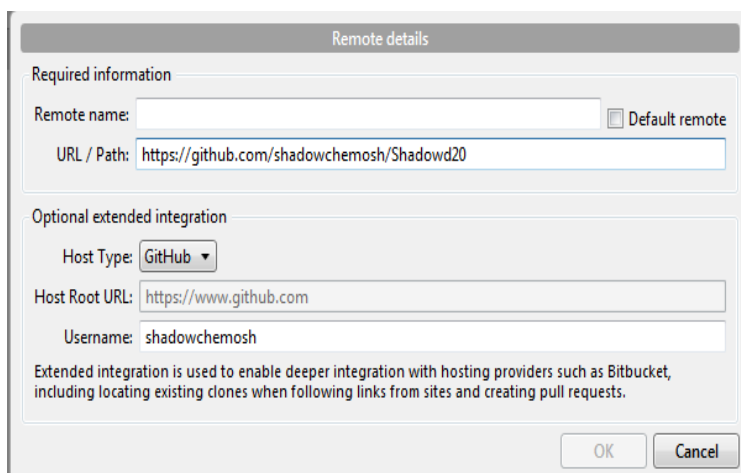
Copy the Link to the community Repository you are trying to setup:

- <https://github.com/shadowchemosh/HL-Pack-Basic>
- <https://github.com/shadowchemosh/HL-Pack-3PP>
- <https://github.com/shadowchemosh/HL-Pack-Campaign>
- <https://github.com/shadowchemosh/HL-Pack-GM>
- <https://github.com/shadowchemosh/HL-Pack-GM-Mythic>

Then in SourceTree go to “**Repository->Add Remote**”.



In the new window press the “Add” button to create a new remote link.



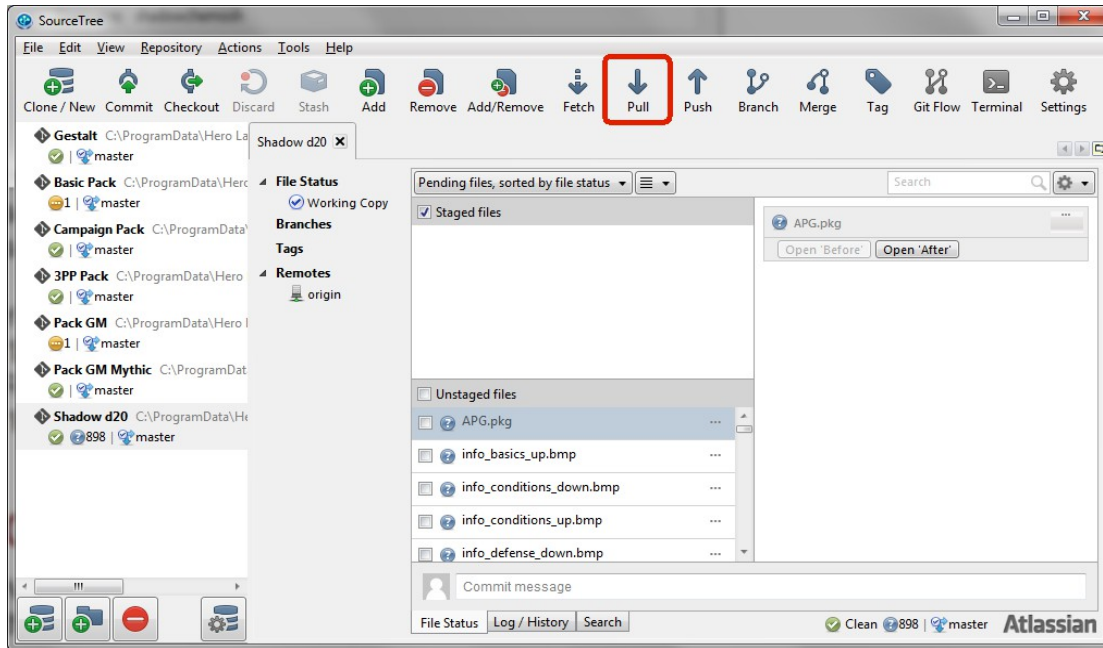
In the new window paste in the remote repository URL in the “**URL / Path:**” section. You will see the **Host Type** and **Host Root URL** is entered for you. Fill in your **Username:** that you setup on GitHub.

You will see the “**OK**” button is still grayed out. In the top right corner you need to press the

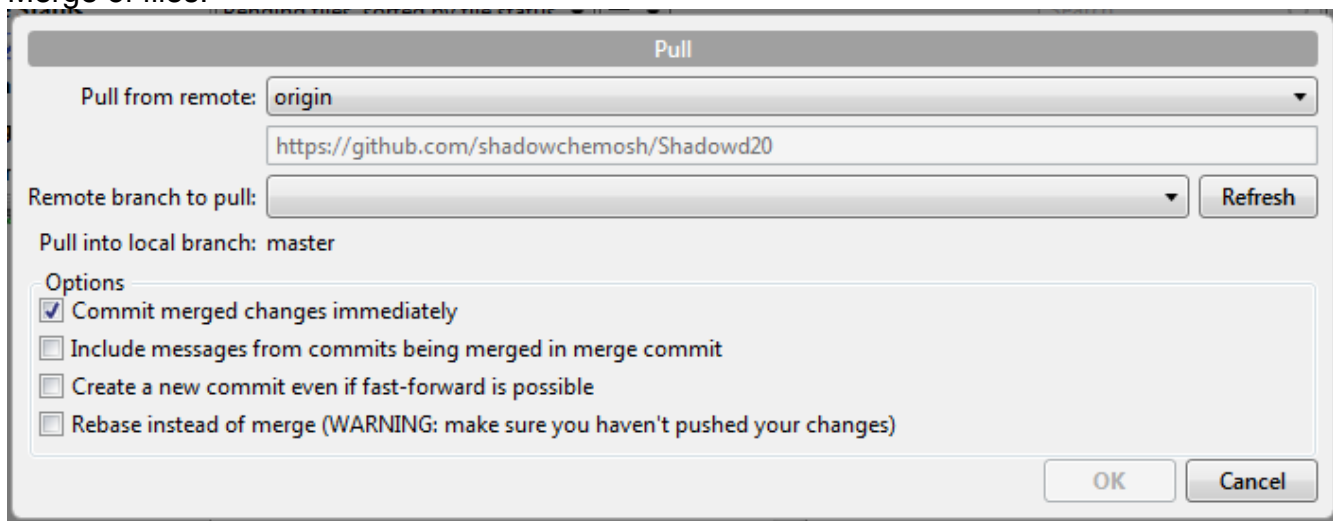
“Default remote” option so the **Remote Name:** is filled in. Once you check mark the Default Remote you can press the “OK” button and then press “OK” a second time to get out of the “Repository Settings” window.

Getting/Pulling down the Pack user files

Now that you have the local and remote settings setup you need to do an initial Pull to get all the files from github onto your local computer.

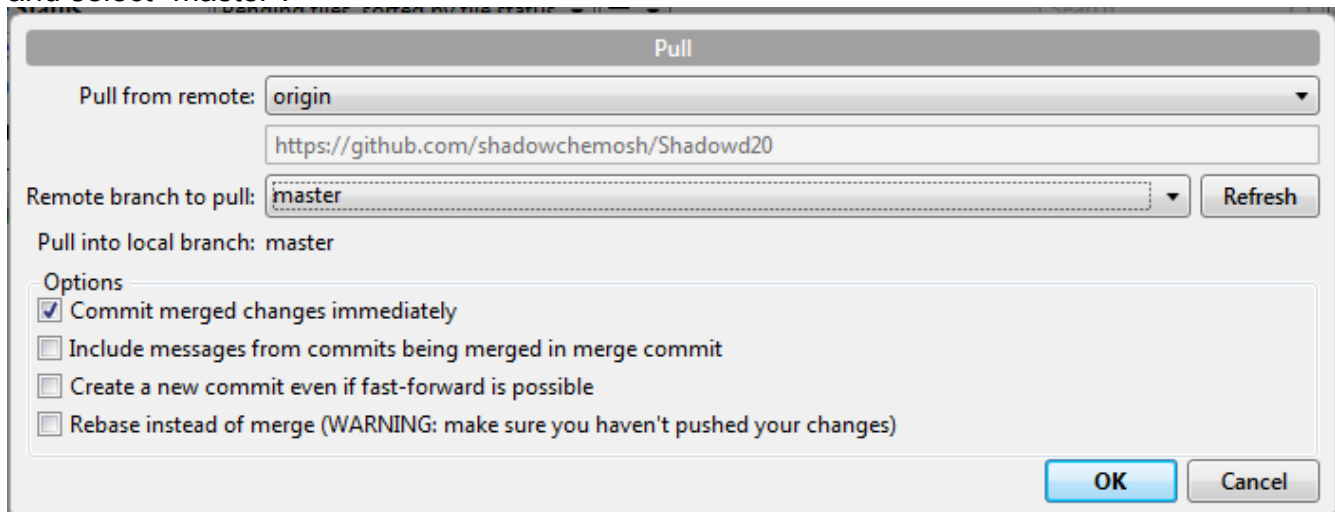


Make sure you see the “Tab” for your repository and click the “Pull” button to do a Pull and Merge of files.



On the new window the “OK” button initially is going to be grayed out. Make sure you check mark “**Commit merged changes immediately**”. Then click on the “**Refresh**” button next to “**Remote branch to pull:**”. After “refresh” runs pull down the list of “Remote branch to pull:”

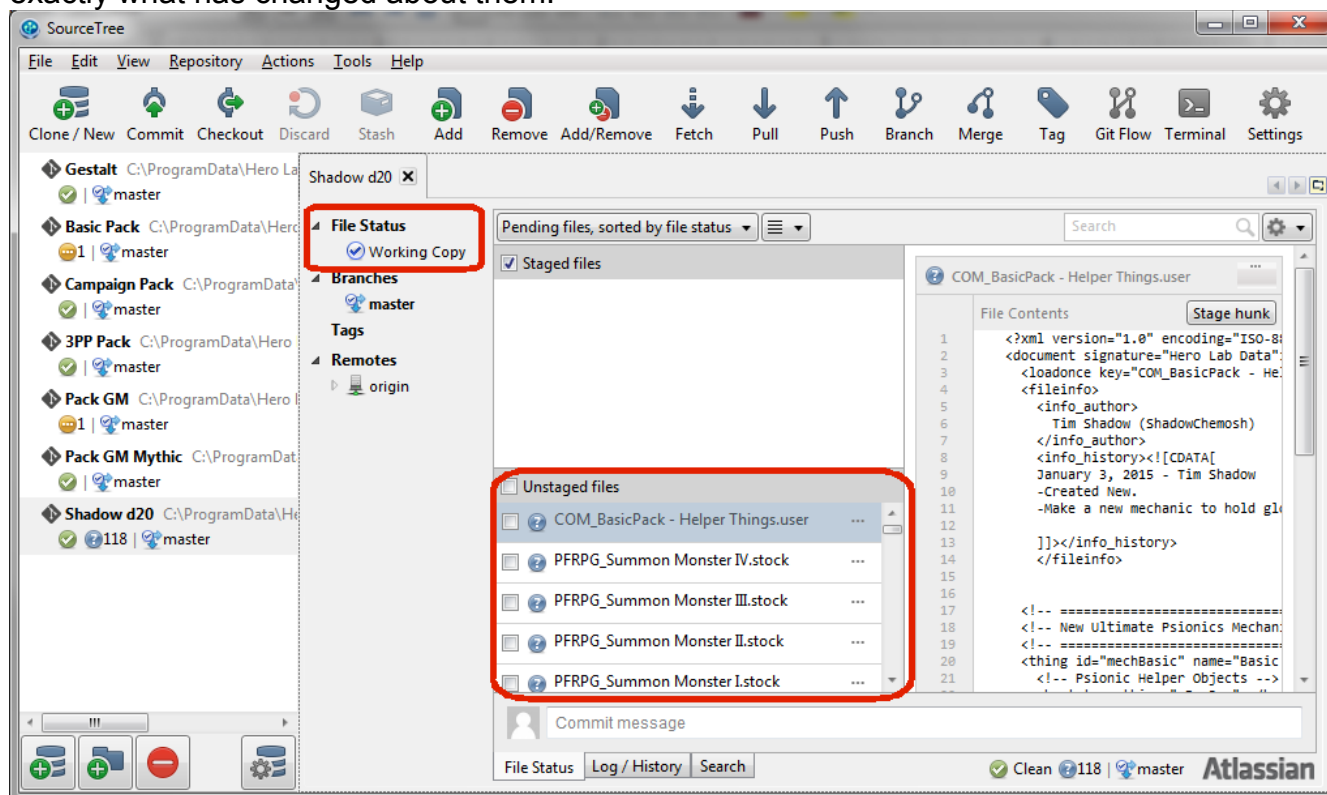
and select “master”:



Now click on the “**OK**” button do the initial pull down of all the user, .1st, .stock and folders into your local version of Hero Lab. This will also bring down a copy of the git ignore list which prevents SourceTree from seeing the LW files as files that are new or changed.

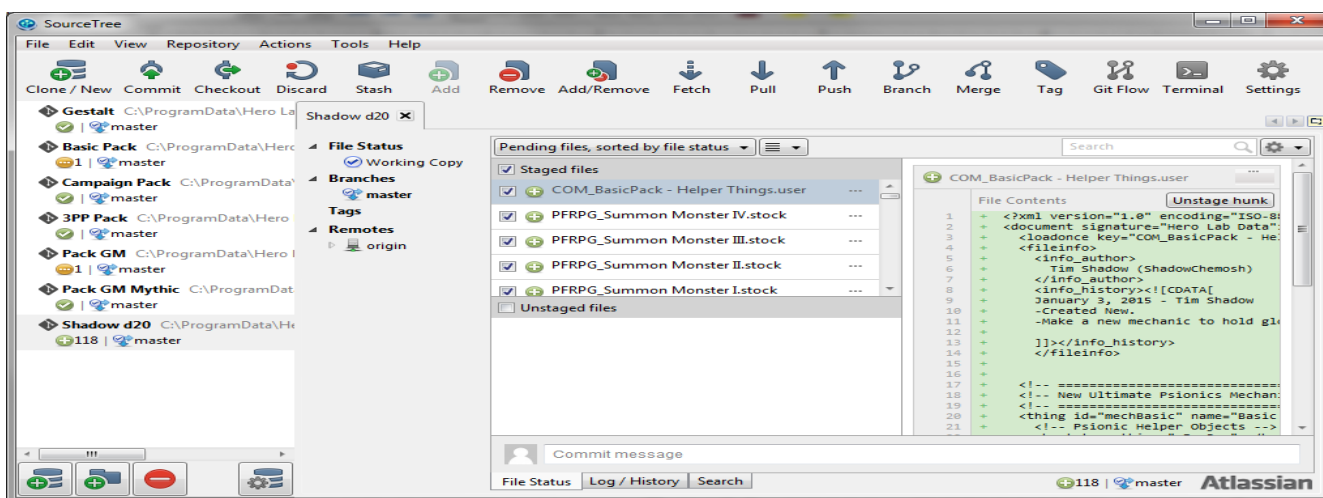
How out push your changes to GitHub

Now once you make changes to your local files you need to Commit them and Push them to GitHub. If you look in your Working Copy section it will show you what files you changed and exactly what has changed about them:

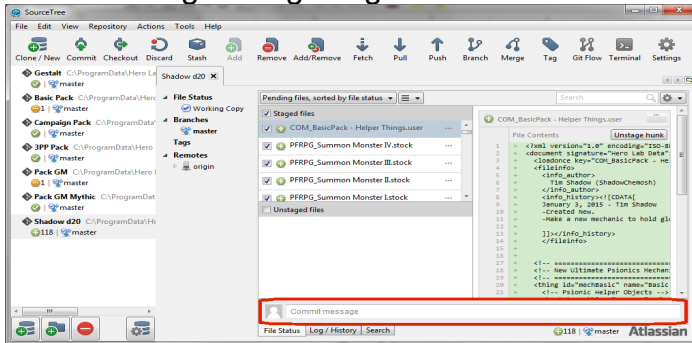


So in the “**File Status / Working Copy**” section SourceTree shows you all the unstaged files that are either “**new**” (Blue Question Mark) or **Changed** (Orange three dots) or **Deleted** (Red Circle). In the far right window is a list showing you what exactly was changed or added.

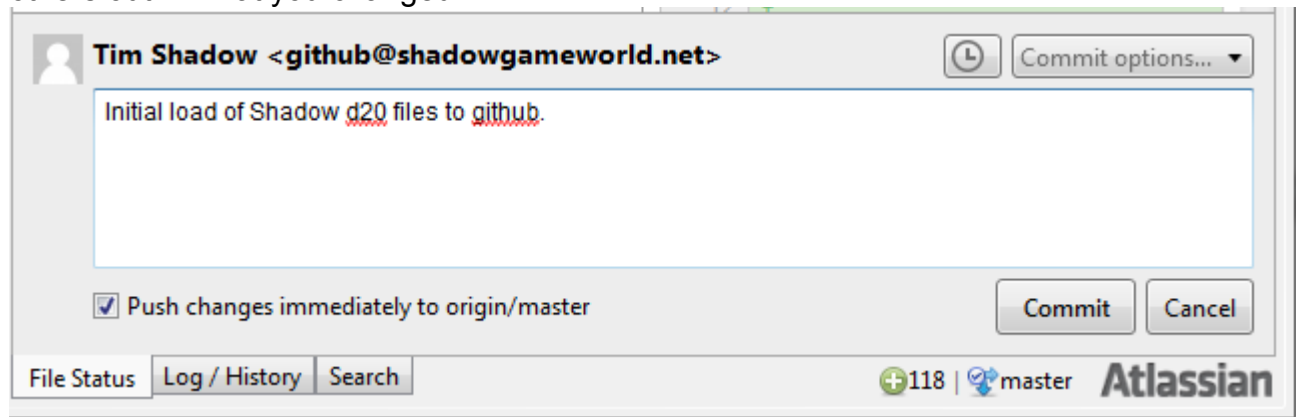
To get these files to GitHub click on the “**Unstaged Files**” check mark to stage all your files at once:



Now in the above example I have 118 files staged to go. But I am required to input a comment to get things to go. So click in the “**Commit Message**” section:



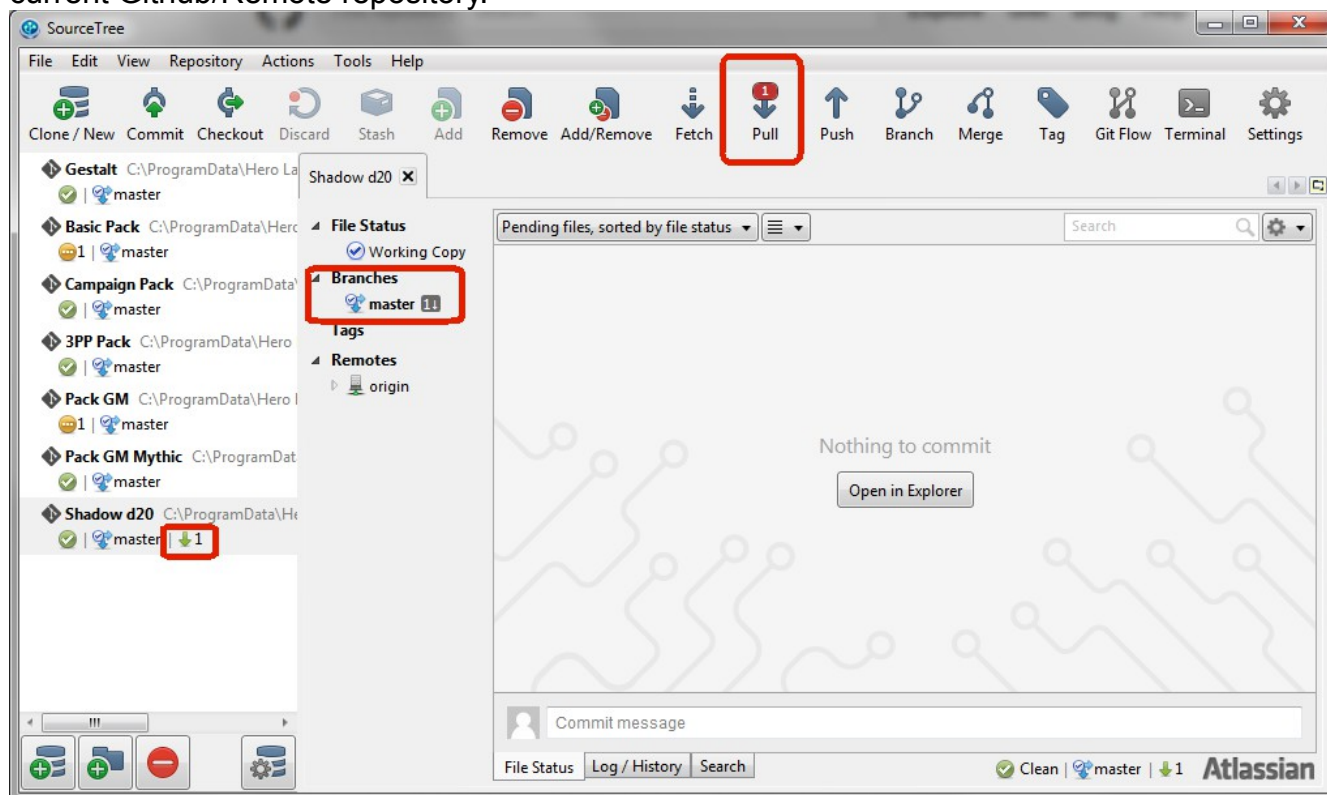
In the commit message section type in a helpful and meaningful message to help yourself and others out in what you changed:



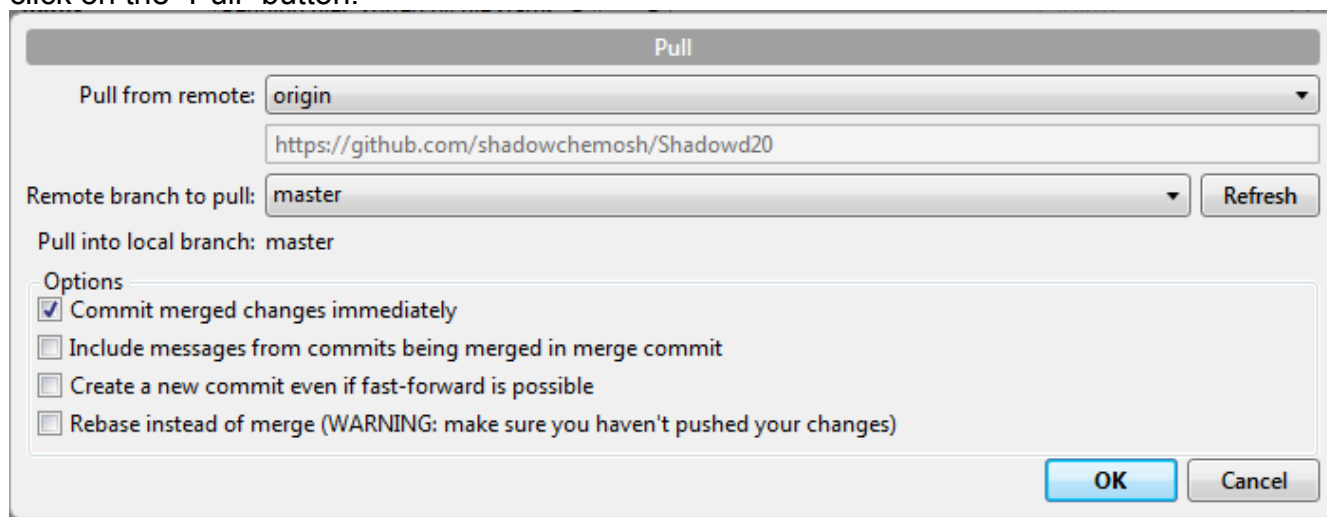
You can then check mark the “**Push changes immediately to origin/master**”. This will do the commit and push all at once. Then press the “Commit” button and SourceTree will upload your changes to GitHub.

How to get changes from GitHub

So the point of this repository is that others will be making changes at the same time as you. So eventually you will start up SourceTree and see that it has marked that you are behind the current Github/Remote repository.



As you can see here a single set of changes has been done to Shadow d20. So SourceTree is telling me to update I need to “Pull” and merge those changes into my local repository. So click on the “Pull” button.



The Pull window appears which is already setup from our initial setup. So simply press the “OK” button do a pull and merge.

Once it completes you are now ready to make your changes and push back to GitHub. This process now simply repeats each and every day.